



**Queues Enforth
Development, Inc.**

**visualsolutions
for public safety**

CrimeInfo™



CRIMEINFO™ IS A POWERFUL, FLEXIBLE YET EASY-TO-USE CRIME ANALYSIS SYSTEM DESIGNED TO EMPOWER LAW ENFORCEMENT AGENCIES WITH THE TOOLS TO IDENTIFY, PREDICT AND RESPOND TO PATTERNS OF INCIDENTS IN THE COMMUNITY. *CRIMEINFO* ANALYZES DATA CREATED IN THE NORMAL DISPATCH PROCESS, ALLOWING UP TO THE MINUTE AS WELL AS DETAILED HISTORICAL ANALYSIS.

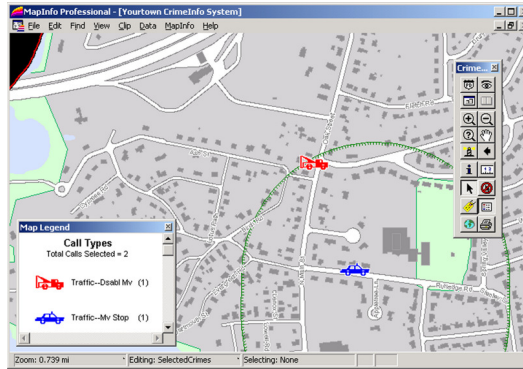
CRIMEINFO™ IS A MAPINFO PROFESSIONAL GIS APPLICATION, AND CAN INCORPORATE ANY COMMERCIALLY AVAILABLE OR MUNICIPAL STREET DATA TO ENSURE THE HIGHEST ACCURACY. ALL QUERY AND IMPORT SCREENS ARE CLEAR, CONCISE AND HIGHLY INTUITIVE. COLORFUL, INFORMATIVE ANALYTICAL MAPS ARE AVAILABLE ON SCREEN AND A SINGLE CLICK CAN PRODUCE A CLEAR AND COMPLETE LAYOUT FOR HARD COPIES.

FEATURES

- ▶ **Data import wizard** facilitates analysis of calls for service, UCR or NIBRS incidents, arrest, or citations records.
- ▶ **Municipal GIS layers** & orthophotos can be integrated to give your maps high accuracy & visual realism.
- ▶ **Easy-to-use query menu** generates complex queries in seconds.
- ▶ **Finished professional layouts** for standard size to large format printing save you hours in final map production time.

USES & BENEFITS

- ▶ **Internal Planning:** Assess crime trends for any geography in your jurisdiction.
- ▶ **Community Meetings:** Prepare maps & slide presentations for neighborhood/town meetings.
- ▶ **Court Cases:** Prepare large format maps in seconds for trial hearings the same day.
- ▶ **Roll Calls:** Show daily focus areas to address recent crime patterns.
- ▶ **Department Newsletter:** Include high-quality color maps & graphs.
- ▶ **Internal Officer Orientation:** Use demographic & crime maps to orient new officers to your jurisdiction in minutes.
- ▶ **Grant Applications:** integration of professional-quality maps makes your grant applications have greater impact and stand out from the crowd.
- ▶ **Traffic / MV Stop Analysis:** Target the most problematic accident & traffic violation locations with accurate maps & graphs.



CrimeInfo integrates custom map layers for optimal accuracy in addressing and visual analysis.

WHO SHOULD USE CRIMEINFO?

Integrated with Acuity RMS

CrimeInfo retrieves data from a generic ASCII text file exported from the Acuity Booking System web page, eliminating the need for data entry and the potential for error.

A FULLY INTEGRATED MAPPING SOLUTION

Smooth Data Import Procedure

Define imported data formats from your department's CAD system with a simple point-and-click data import procedure. *CrimeInfo* automatically updates case information upon import, avoiding duplicate records and retaining the highest possible accuracy.

WHAT ARE THE BENEFITS OF CRIMEINFO?

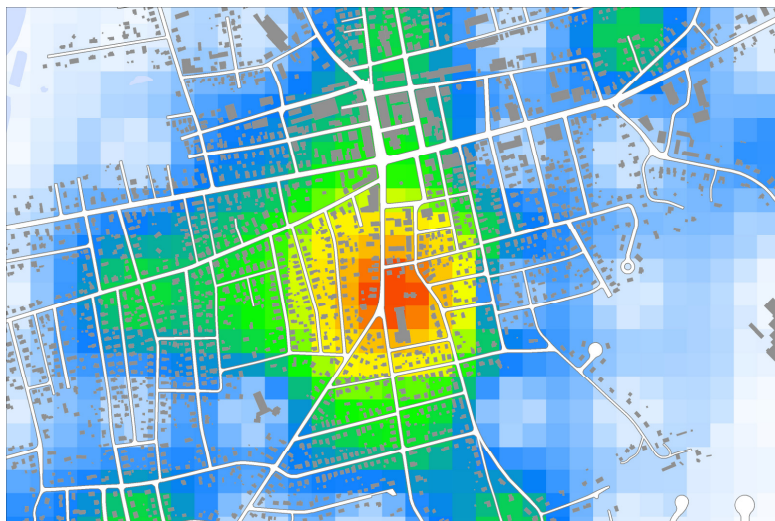
Comprehensive

The principal calls for service, incident, arrest/offender, and traffic citations detail fields from Acuity RMS records are maintained in the mappable database, enabling a visual investigative and strategic analysis of neighborhood and incident patterns.

Flexible

CrimeInfo enables you to refine the analysis of your department's own codes and categories, and to display the results against your own

"Hot spot"
or
interpolated
maps make
crime
patterns
visible at a
glance .



ADVANCED VISUAL ANALYSES

CrimeInfo empowers you to generate many types of sophisticated maps in seconds, including:

- ▶ Traditional pin maps
- ▶ "Top Address" pin maps & graphs with graduated symbols & custom labels
- ▶ "Hot Spot" Maps of static time periods or trends (see pictured to left)
- ▶ Shaded thematic maps (using any boundaries shipped with the application)
- ▶ Visual Patrol Sector Realignment Module (requires RA boundaries to be

CUSTOM MAP DETAIL

We can create any new map layers, or incorporate any GIS layers your municipality may already have developed. Typical map layers include:

- ▶ Patrol Sectors
- ▶ Reporting Areas
- ▶ Walking Beats
- ▶ Wards & Precincts
- ▶ Neighborhoods
- ▶ Community Policing Areas
- ▶ School Parcels
- ▶ Park Parcels
- ▶ Building Footprints
- ▶ Parcel Boundaries
- ▶ Open Space Areas
- ▶ Significant Landmark Points
- ▶ Orthophotos

POWERFUL YET SIMPLE SEARCH DIALOGUES

Query by:

- ▶ Call for Service/Incident
- ▶ Date Range
- ▶ Time Range
- ▶ Days of the Week
- ▶ Address Point Perimeters
- ▶ Drug Free Zone Perimeters
- ▶ Street Segment Perimeters
- ▶ Any Other Map Boundaries (See List to Left for examples)

IMMEDIATE SEARCH RESULTS

Graphs, maps and reports equip you with the visual tools for near-real-time analysis.

FOR MORE INFORMATION

To learn more about *CrimeInfo*, call your QED representative at (781) 870-1100, or visit our website at www.qed.com and send an email directly to sales@qed.com.

HARDWARE & SOFTWARE RECOMMENDATIONS

Any newer workstation with Windows 7 or higher, 16 Gb physical memory, dedicated Video card, 1-Gb free disk space on the application PC, DVD drive, 19" monitor, Pitney Bowes MapInfo Professional version 11.

CrimeInfo™



© 2017 Queues Enforth Development, Inc. All rights reserved. MapInfo Professional is a registered trademark of Pitney Bowes Inc. All other marks are the property of their respective holders.



Queues Enforth Development, Inc.

92 Montvale Ave, Ste 4350 Stoneham MA 02180

TELEPHONE
781 870 1100

FAX
781 870 1199

ON THE WORLD WIDE WEB
www.qed.com

EMAIL
corporate@qed.com